



Software Installation Instructions

CMOS Ultima III™

CMOS Usoria™

CMOS Uroria™

Installation Instructions for:

1. SMXM7x CMOS Camera User Software With GUI
2. Direct Show®
3. Twain Driver (for Windows XP only)

Prepared by: Rebecca Gray

Date: March 29, 2006



Software Installation Instructions

CMOS Ultima III™/Usoria™/Uroria™ USB 2.0 Cameras



This guide shows how to install the latest software package for your camera, along with DirectShow®. Windows XP users can also install the Twain Driver.

If this is your first time installing, please follow the steps below.

If you have an Ultima III/Usoria/Uroria CD dated March 2006 or later, you do not need to download the software. Insert the CD into your computer and proceed to Step 2 on page 2.

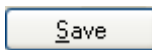
If this is not the first time installing, or if you are experiencing any complications with the software, please see the “Complete Uninstall” section on page 18 before proceeding further.

1. Download Software (If Your CD is Older Than March 2006)

Download the latest version of the Viewbits color camera software package from our website at

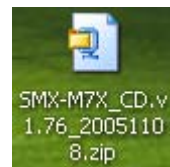
http://www.viewbits.com/SMX-M7X_CD.v1.76_20051108.zip

1a. Click on the link, then select



1b. Select the location on your computer where you would like to save the software package zip file. (Saving to the desktop is recommended, because you can find the file easily.) Select “Save”. The package will begin downloading. (The file size is about 5MB.)

1c. The zip file icon will look like this. The file name may be different depending on the software version. (Your computer may show only the first line of the file name.)

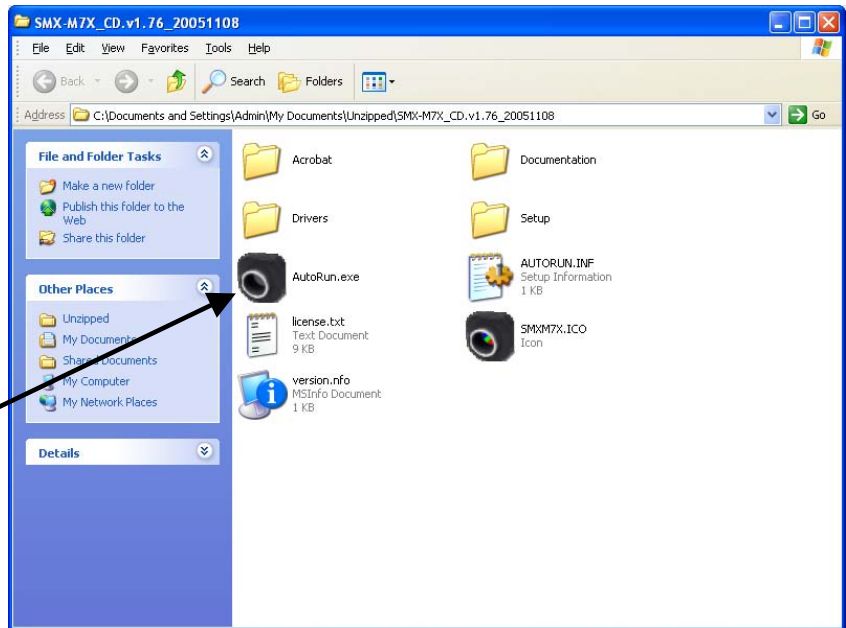


1d. Doubleclick the icon to unzip it with a program like WinZip®.

1e. After the file is unzipped, you will see a folder showing these files. (If you do not see the folder, doubleclick on the unzipped file folder.)

1f. Doubleclick the file named **AutoRun.exe**.

1g. Proceed to Step 2.



2. Install the USB Driver

If your CD is dated March 2006 or later, insert the CD into your computer.

2a. This screen will be displayed. Select **“Install USB Device Driver”**.



2b. If Microsoft warnings are displayed, press the **Continue Anyway** button. The driver is now plugged into your computer.

2c. You may see the following message or one similar to it. Select **“OK”**.



3. Install the SMXM7x CMOS Camera User Software

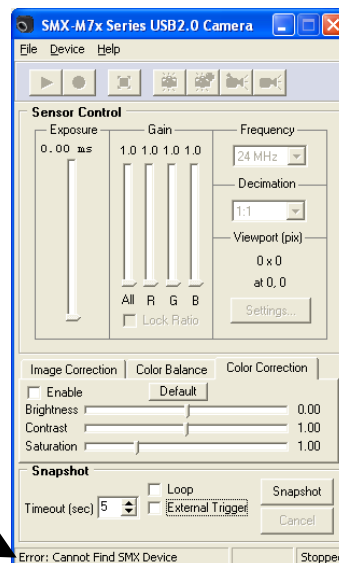
3a. From this screen, select “**Install SMXM7x Software**”.

3b. Follow the instructions in the Camera Software Setup Wizard. Use the defaults that are suggested.



3c. This window will be displayed. It is the main software menu.

3d. You will see an error message because the camera is not connected. You'll connect the camera in the next step.



4. Connect the Camera to Your Computer

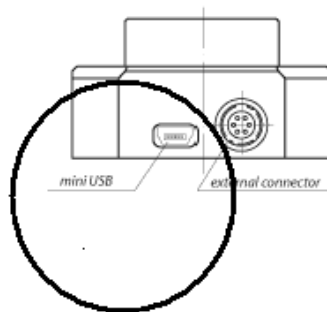
- 4a. This package contains the CMOS Color USB 2.0 camera, a USB cable to connect the camera to your computer, and a half-inch C-mount adapter to connect the camera to a tripod.



- 4b. Screw your half-inch camera lens onto the front of the camera.




- 4c. Connect the USB cable (included in the package) to the mini USB port on the left of the camera.



- 4d. Connect the camera to the USB 2.0 port on your computer with the USB cable.



- 4e. When the camera is plugged in for the first time, use the defaults suggested by the **Install New Hardware** wizard.
- 4f. If additional Microsoft warnings are displayed, press the  button.
- 4g. If you will not be using DirectShow or Twain, you can begin using your camera now, using the viewer included with the software. Please refer to the Quickstart for information on operating the camera.

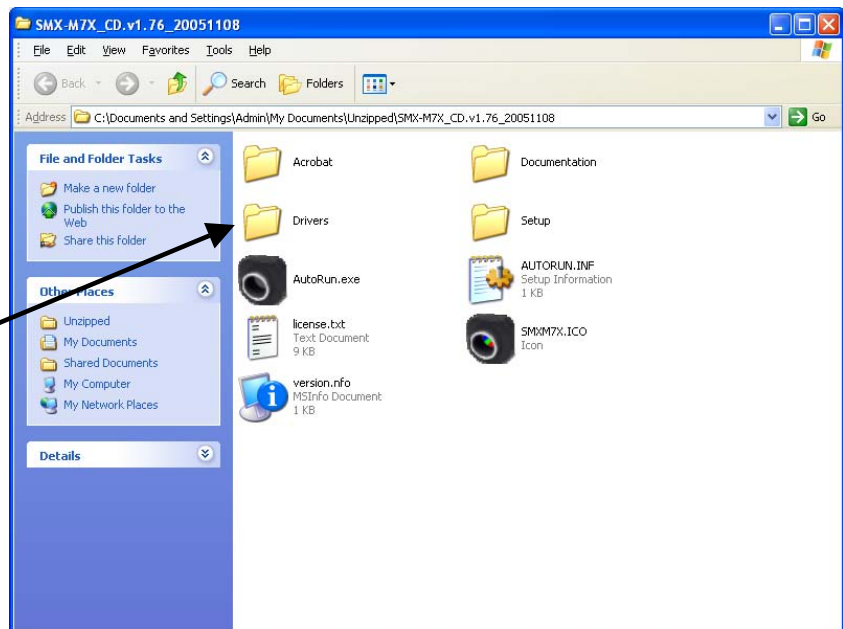
5. Install the DirectShow Driver

5a. From this screen, select **“Browse CD”**.



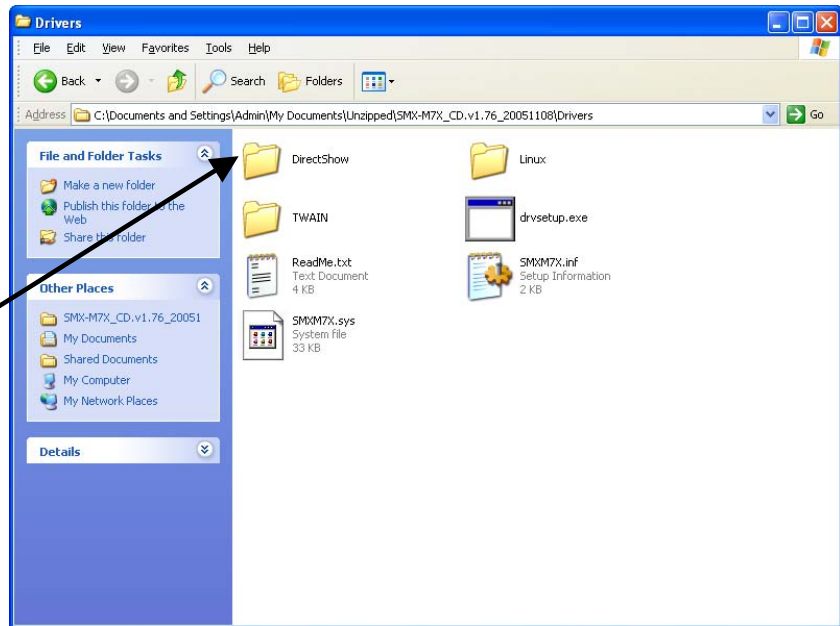
5b. This screen will appear.

5c. Doubleclick the folder named **“Drivers”**.



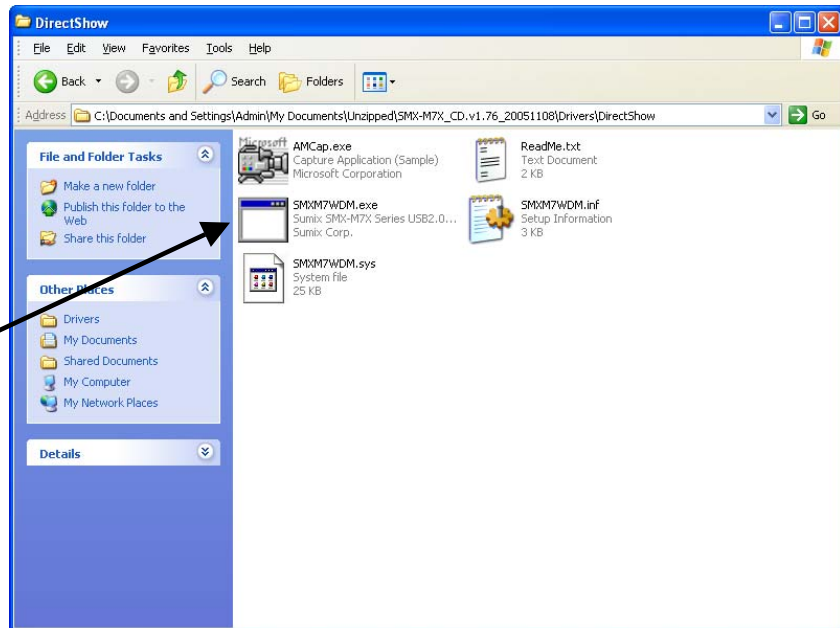
5d. This screen will appear.

5e. Doubleclick the folder named **“DirectShow”**.




5f. This screen will be displayed.

5g. Doubleclick the icon named **“SMXM7WDM.exe”**.

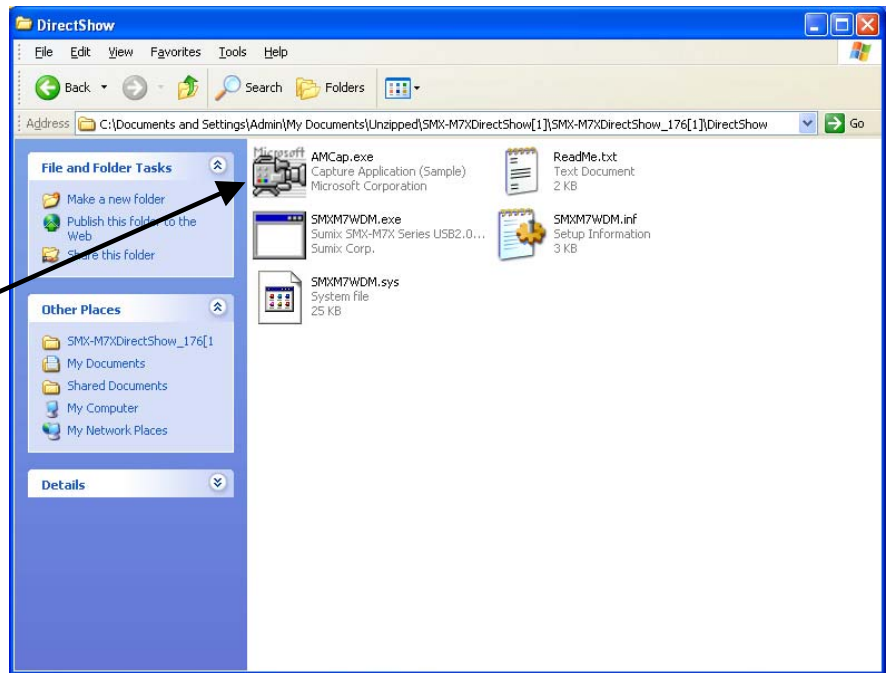


4h. DirectShow will start installing. Use the defaults suggested by the **Install New Hardware** wizard.

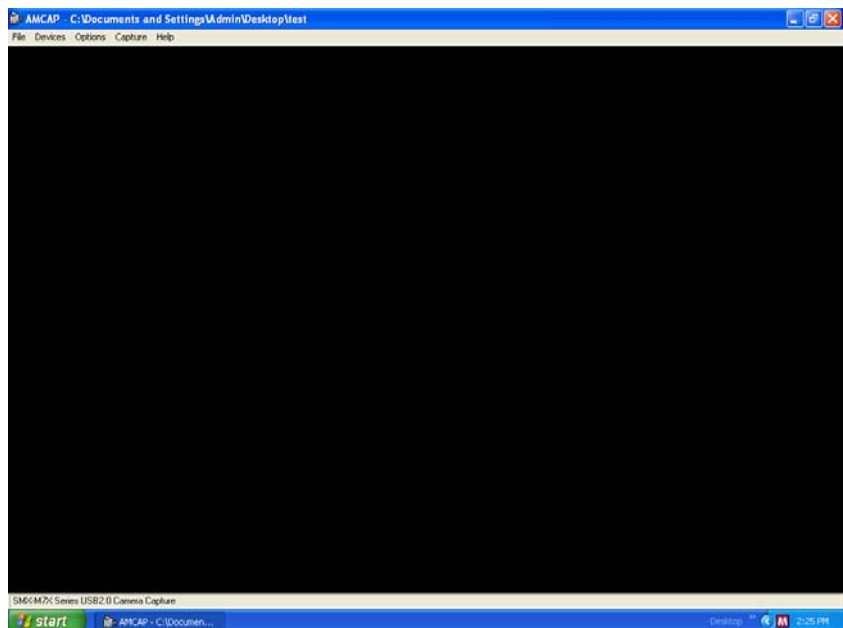
4i. If additional Microsoft warnings are displayed, press the  button.

6. Test and Configure DirectShow

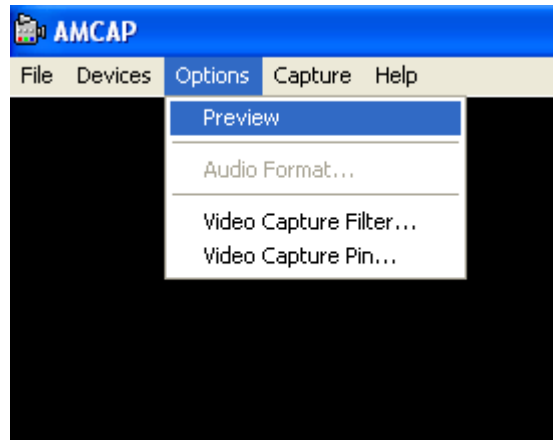
- 6a. In the DirectShow folder, doubleclick the program file: **AMCap.exe**



- 6b. This screen will appear.



- 6c. Select **“Options”**,
then **“Preview”**.

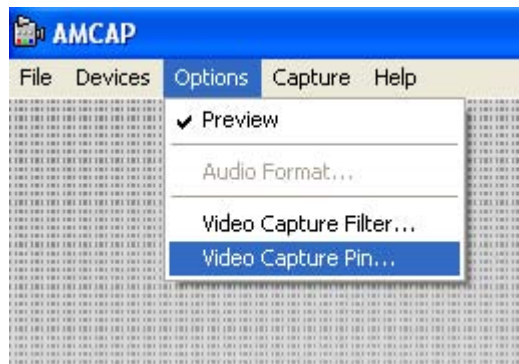


- 6d. The camera image
will appear.

NOTE: The camera view
is black and white when
DirectShow first starts.
You will change to color
in the next step.

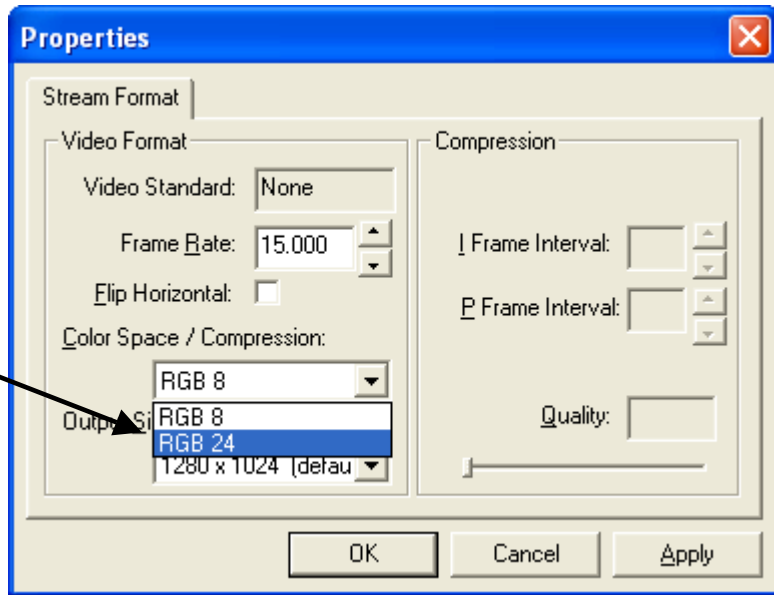


- 6e. Select **“Options”**,
then **“Video
Capture Pin”**.



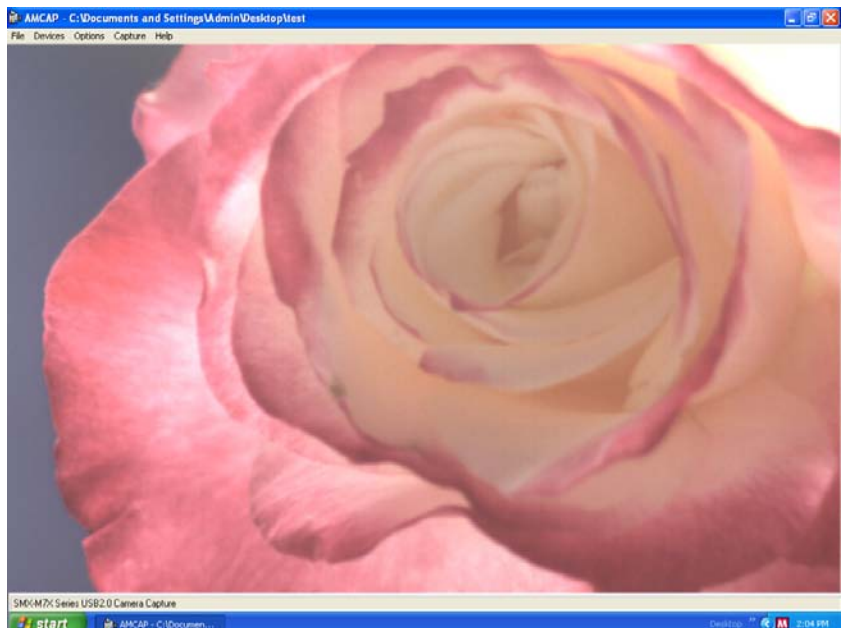
6f. This window will appear. Under “Color Space / Compression” select “RGB 24”.

6g. Select  .



6h. A color image will appear.

You are ready to begin using DirectShow.




7. Install the Twain Driver (Windows XP WIA)

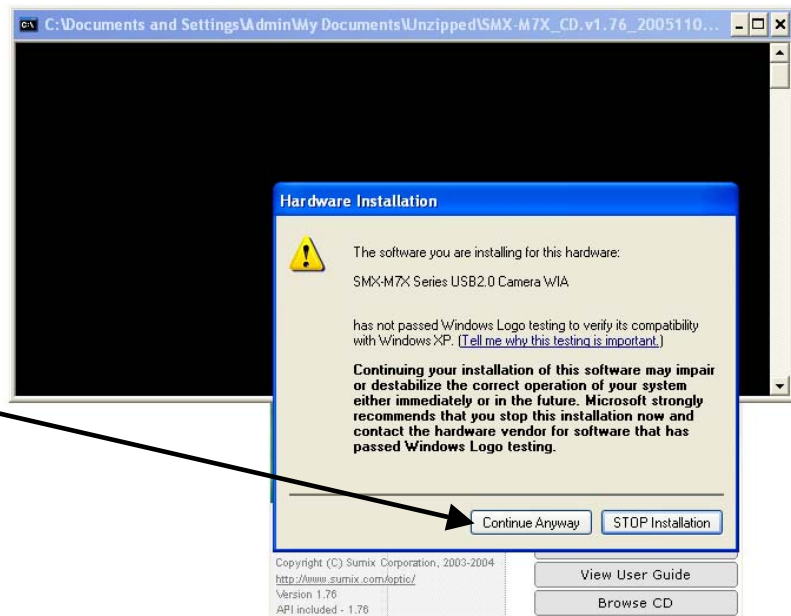
If you have Windows XP, we recommend installing the Twain Driver. With the Twain driver, you can place your photos directly into image processing software like Microsoft Paint and Adobe Photoshop®, without having to re-open the photo files. Twain is a standard for graphics and imaging that allows hardware such as cameras and scanners to communicate with image processing software.

NOTE: *The Twain Driver is only for Windows XP operating systems.*


8a. From this screen, select “**Install TWAIN Driver**”.



7b. These screens will appear. Press the  button.



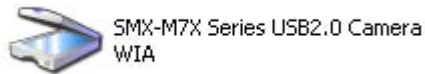
7c. TWAIN will start installing. Use the defaults suggested by the **Install New Hardware** wizard.

7d. If additional Microsoft warnings are displayed, press the  button.

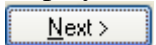
7e. Restart (reboot) your computer. (See Section 8k.)

8. Using Twain to Import Images Into Scanner and Camera Wizard


- 8a. Select “**Start**” -> “**Settings**” -> “**Control Panel**”.
- 8b. Doubleclick “**Scanners and Cameras**”.
- 8c. Doubleclick this icon that appears in the “**Scanners and Cameras**” folder.

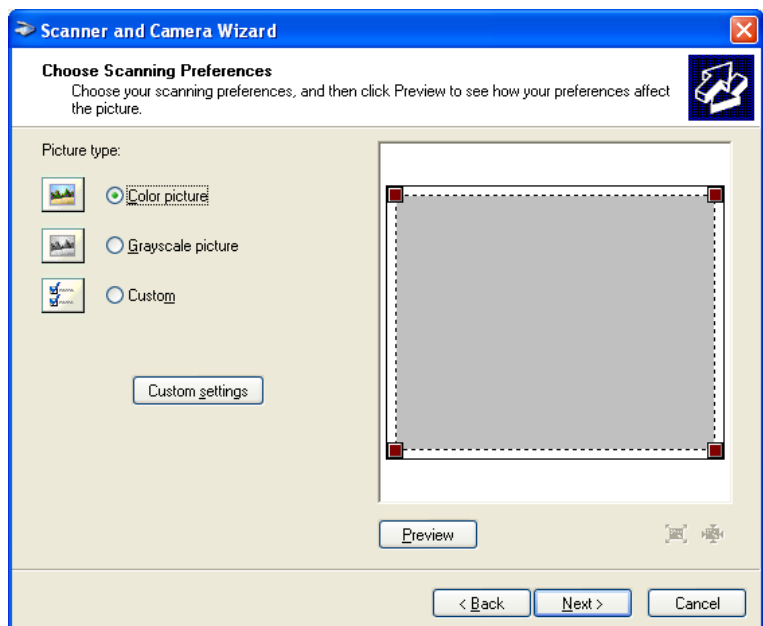


- 8d. This screen will be displayed. Select



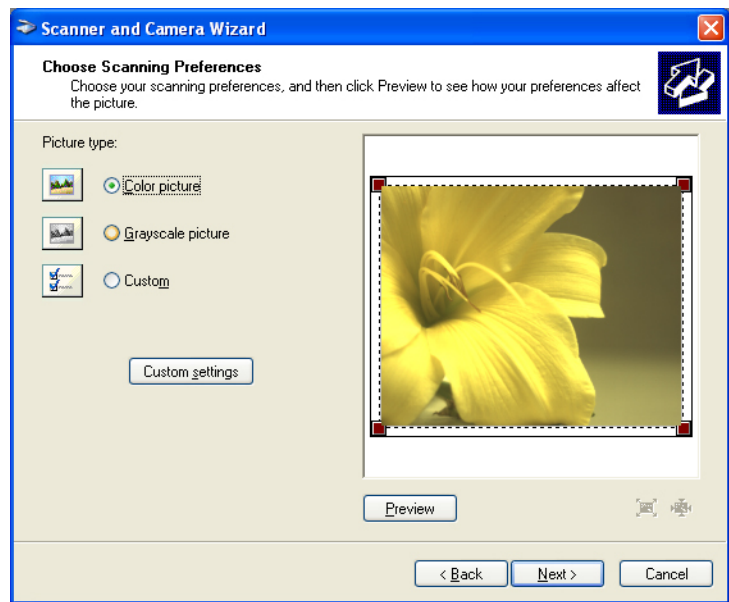
- 8e. This screen will be displayed. Under “**Picture Type**”, select “**Color Picture**”, “**Grayscale picture**” (black and white), or “**Custom**”.

- 8f. Select  to view the camera image to be scanned.



8g. The image will appear in the preview window. Re-arrange the image if needed.

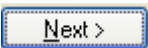
8h. Select .

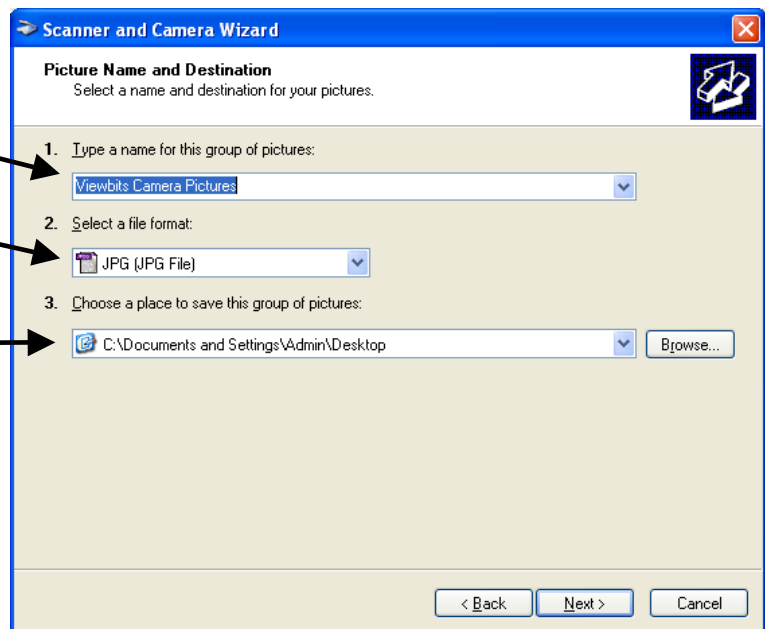


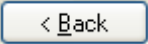
8i. This screen will be displayed. Type a name for the group of pictures.

8j. Select a file format. JPEG is recommended.

8k. Select a location to save your pictures.

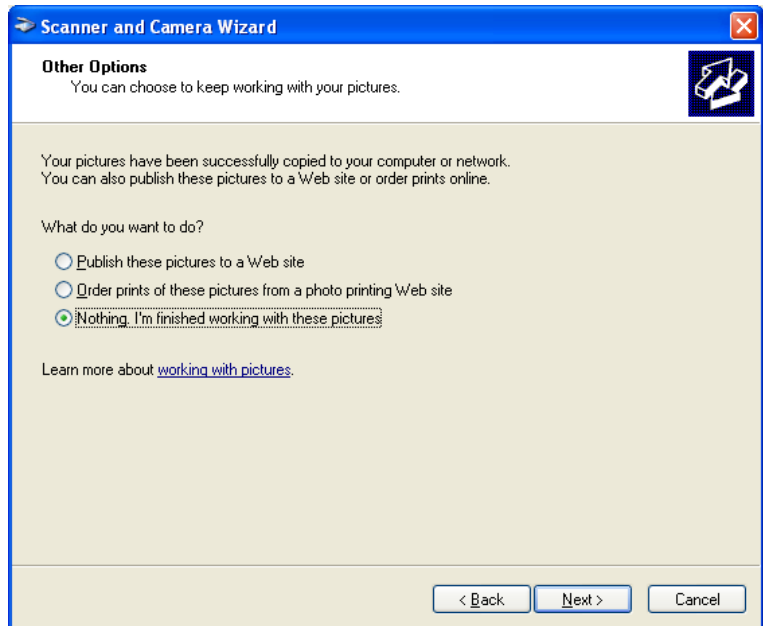
8l. Select  and your picture will be scanned.




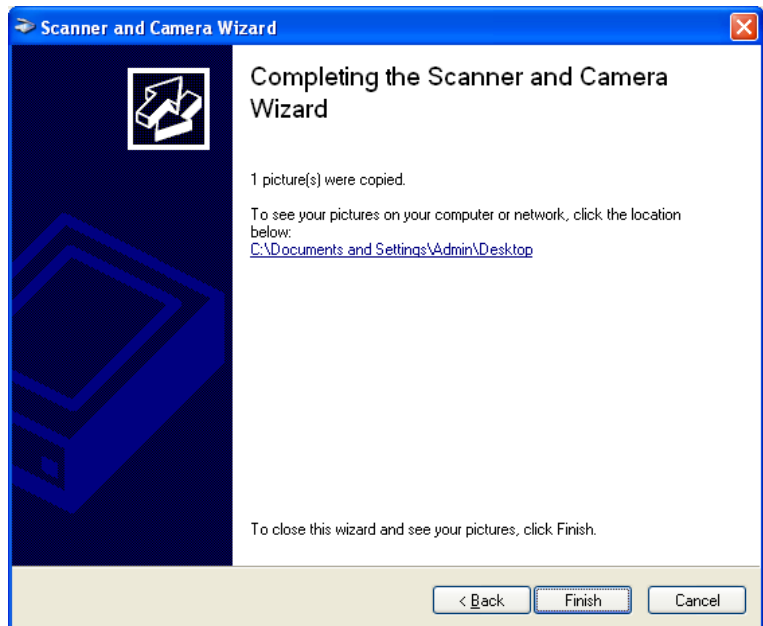
8m. This screen will appear. To take more pictures, select  and you will be returned to the preview window.

8n. Select one of the three choices shown.

8o. Select .



8p. This screen will appear. Select .

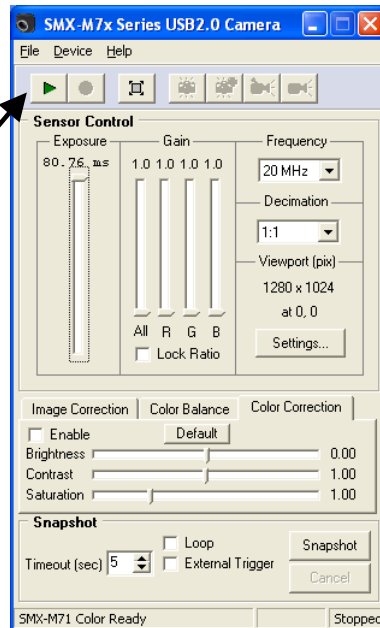


9. Using Twain to Import Images into Microsoft Paint

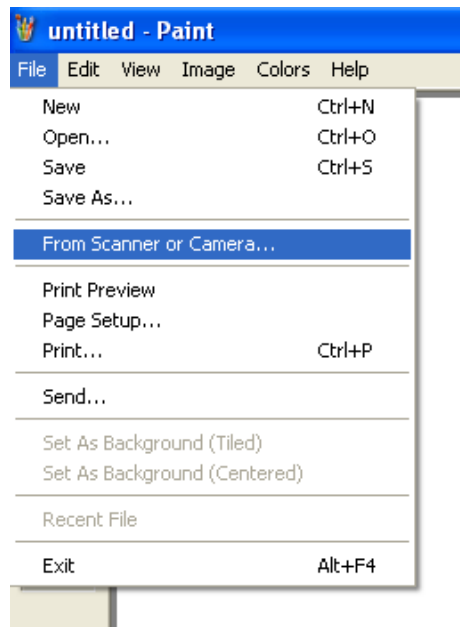
- 9a. Once your computer is up and running again, doubleclick the camera icon on your desktop.



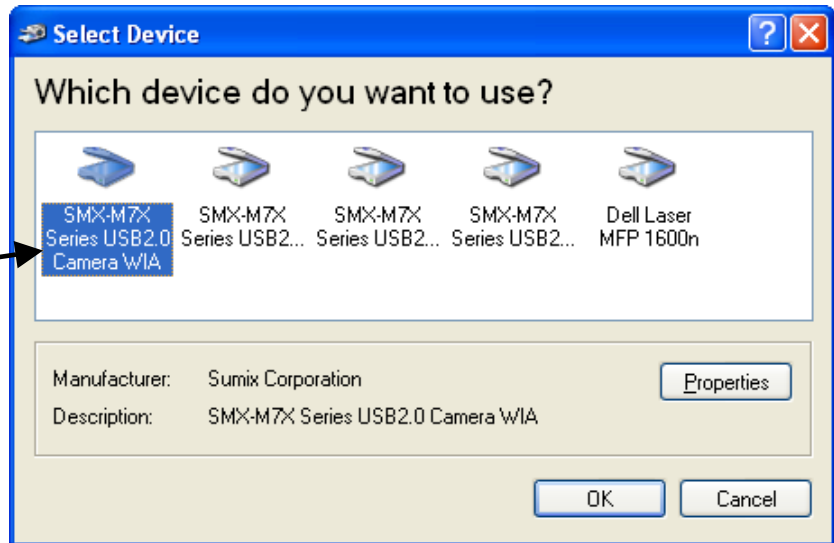
- 9b. This screen will appear. To start the camera, select the green arrow.



- 9c. Open Microsoft Paint. (Select **"Start"**->**"All Programs"**->**"Accessories"**->**"Paint"**.)
- 9d. Select **"File"**-> **"From Scanner or Camera"**.




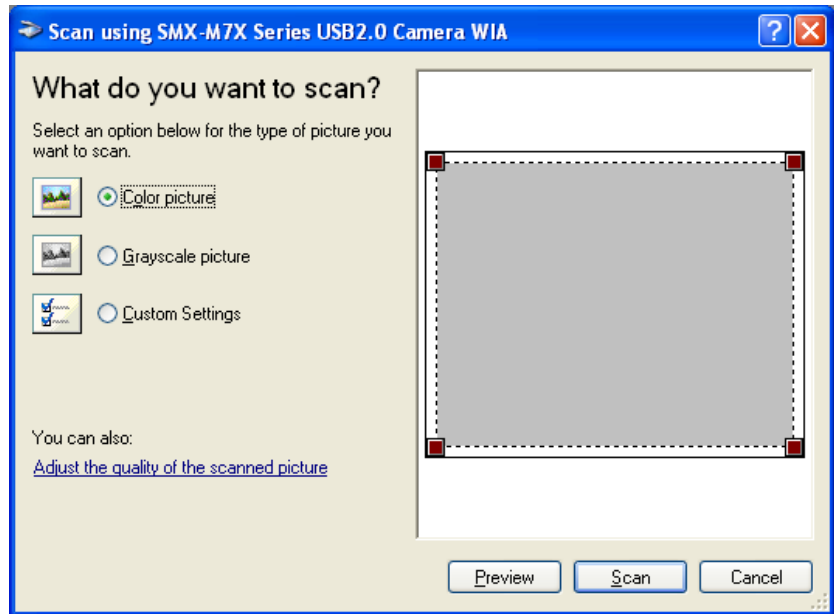
9e. This screen will appear. Select **“SMX-M7X Series USB 2.0 Camera WIA”**.



9f. Select .

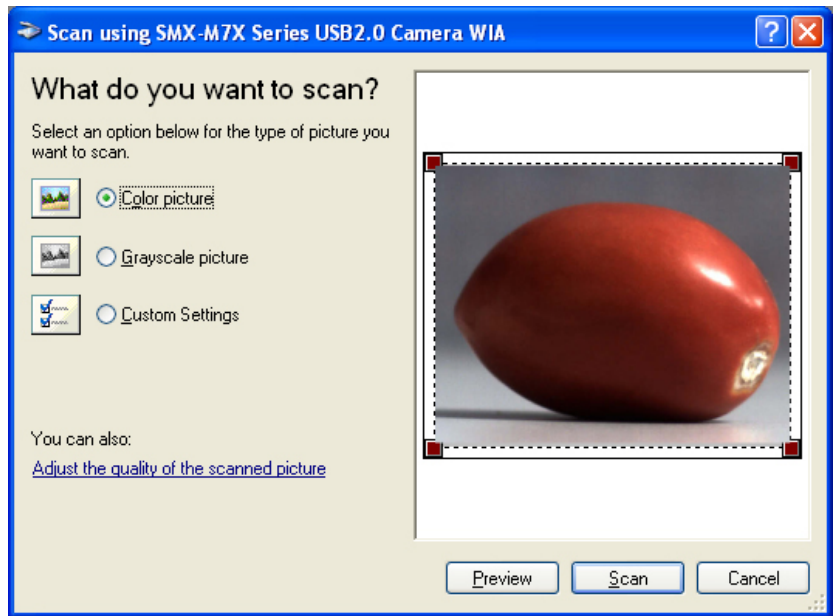
9g. This screen will appear. Select **“Color Picture”**, **“Grayscale picture”** (black and white), or **“Custom”**.

9h. Select  to view the image from the camera to be scanned.

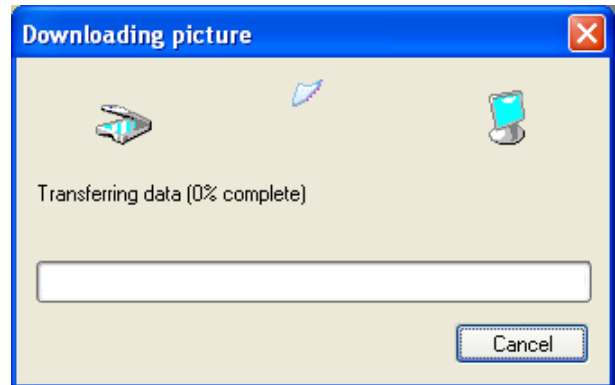


9i. Your image will appear in the preview window. Re-arrange the image if needed.

9j. Select .

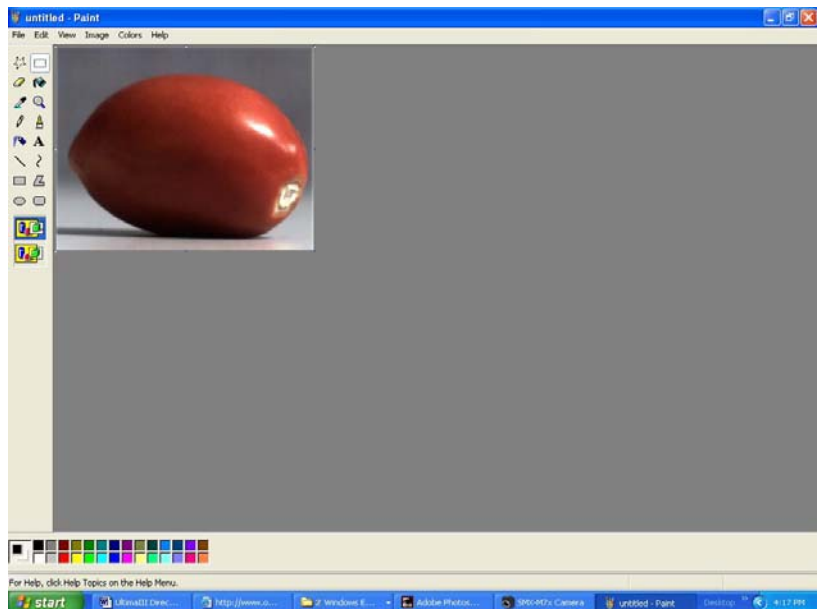


9k. This screen will appear and your image will be scanned.



9l. Your photo will appear as an untitled file.

9m. Save the file.

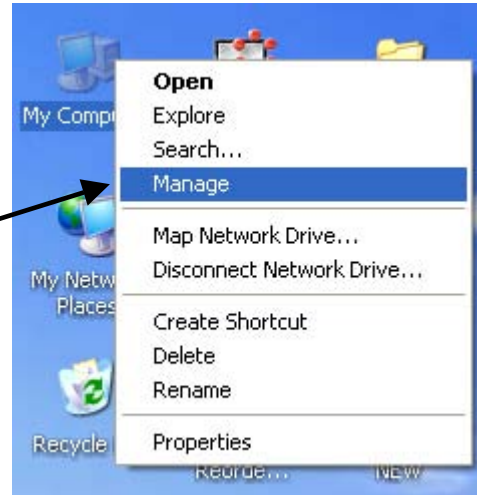


10. Complete Uninstall

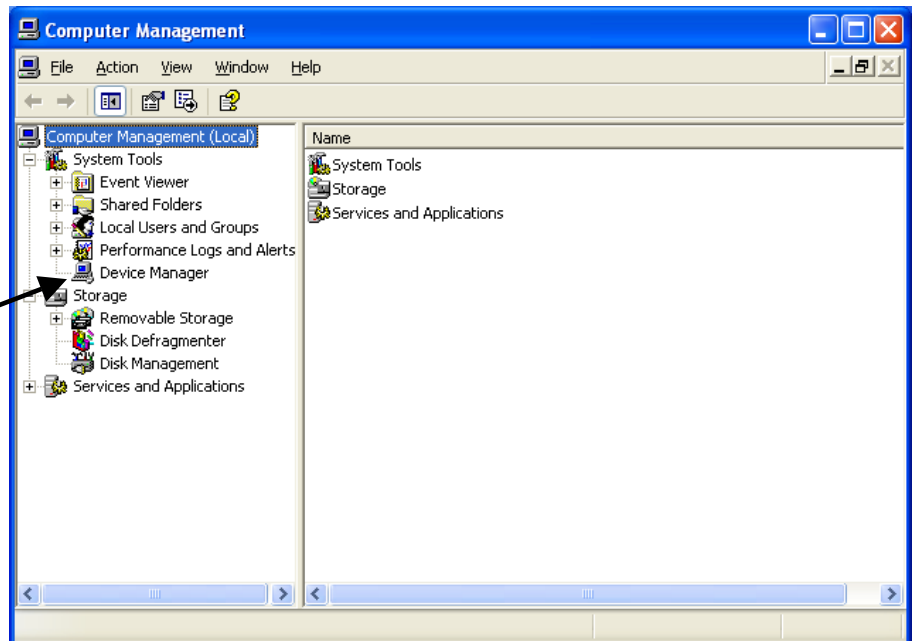
If this is not the first time you have installed the software, if there is a possibility of an older version of any of the camera's software being present on your PC, or if you are experiencing any complications with the software (such as reboots, system lock-ups or the "blue screen of death"), please follow the steps below thoroughly before proceeding to the "Install" section.

10a. Connect the camera to your computer – see Step 4, above.

10b. Right click on the **My Computer** Icon. Select **"Manage"**.

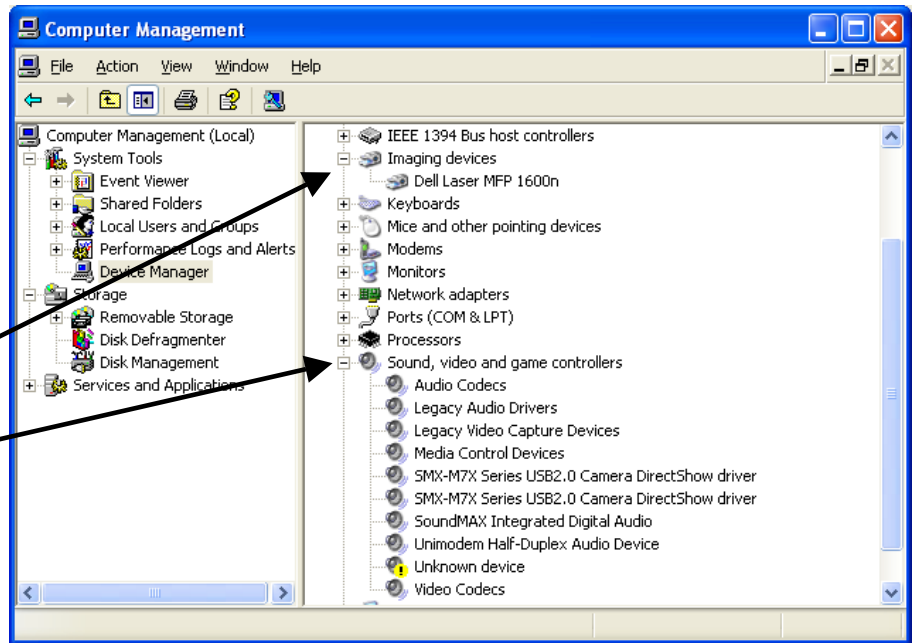


10c. In the Computer Management window, select **"Device Manager"**.

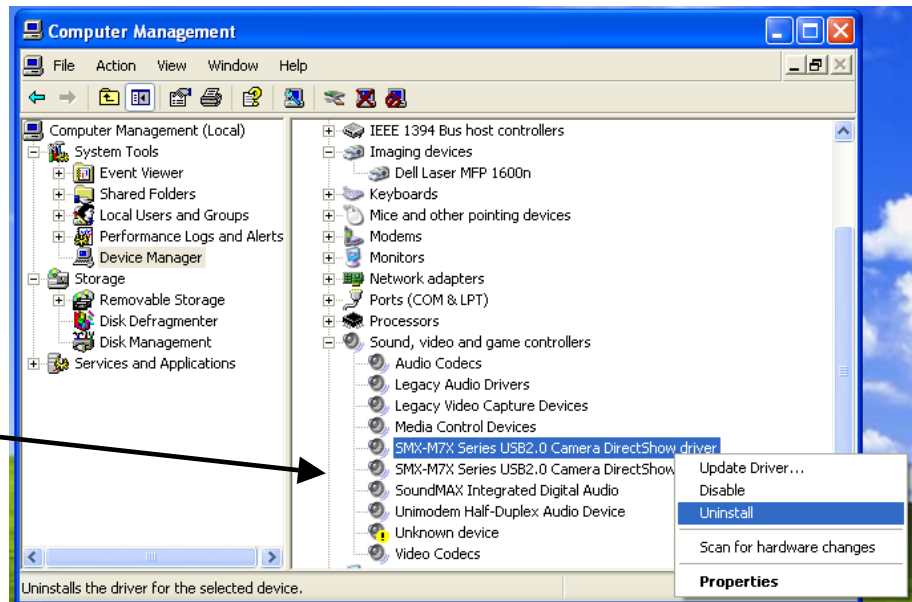


10d. In the right pane of the “**Computer Management**” window, doubleclick “**Imaging Devices**”.

10e. Doubleclick “**Sound, video and game controllers**”.



10f. One by one, right click on each instance of the SMX camera(s), and select “**Uninstall**”.

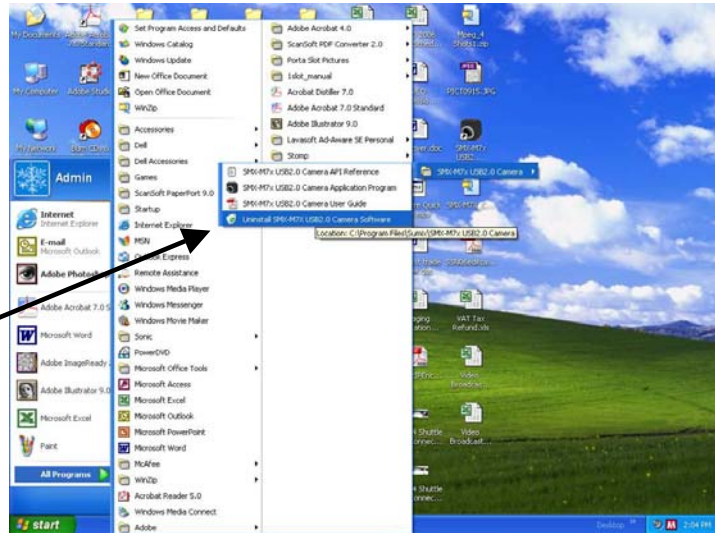


10g. This screen will appear. Select “**OK**”.

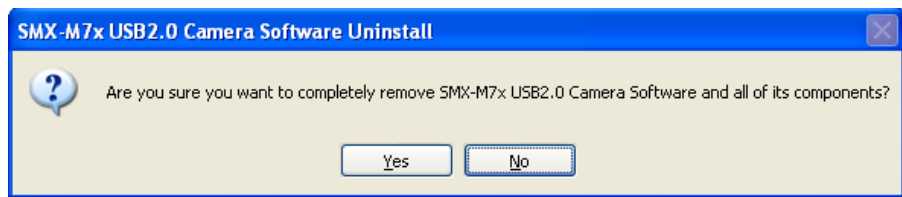


10h. To uninstall the camera software, go to the “**Start**” menu. Select “**All Programs**”.

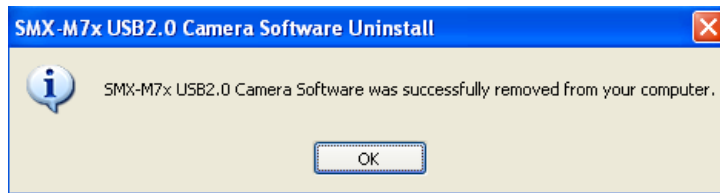
10i. Select “**Sumix**” from the list of programs, select the camera, then select “**Uninstall**”.



10j. This screen will appear. Select .



10k. This screen will appear. Select .



10l. Disconnect the camera from your computer.

10m. Finally, restart (reboot) your computer.

10n. Once the computer has finished restarting, you’ll need to ensure that all remnants of the software and hardware installation(s) are no longer present. Plug in the camera with the supplied USB 2.0 cable, as shown in Step 4. (Be sure to use the USB 2.0 port and not a regular USB port.)

10o. If the “**Found New Hardware Wizard**” starts up, then begin installing and use the defaults suggested by the “**Install New Hardware**” wizard.

10p. If additional Microsoft warnings are displayed, press .

10q. If the “**Found New Hardware Wizard**” does not start up, and the icon does not appear in the taskbar on the lower right corner of the Desktop screen, then repeat steps 8c-8g. (Select “**Device Manager**” in the “**Computer Management**” window, etc.)

10r. If you still have problems with uninstalling or installing, please call Viewbits Tech Support at **858-613-1818**.

11. Technical Support

For technical support, call the Viewbits division of Computer Modules, Inc. at **858-613-1818** or email al@viewbits.com.



Division of Computer Modules, Inc.
11409 West Bernardo Court
San Diego, California 92127
Phone: 858-613-1818
Fax: 858-613-1815
www.viewbits.com

© 2006 Computer Modules, Inc. Viewbits, Ultima III, Usoria, and Uroria are trademarks of Computer Modules, Inc. DirectShow is a registered trademark of Microsoft Corporation. All other trademarks and registered trademarks are the properties of their respective owners. All rights reserved.